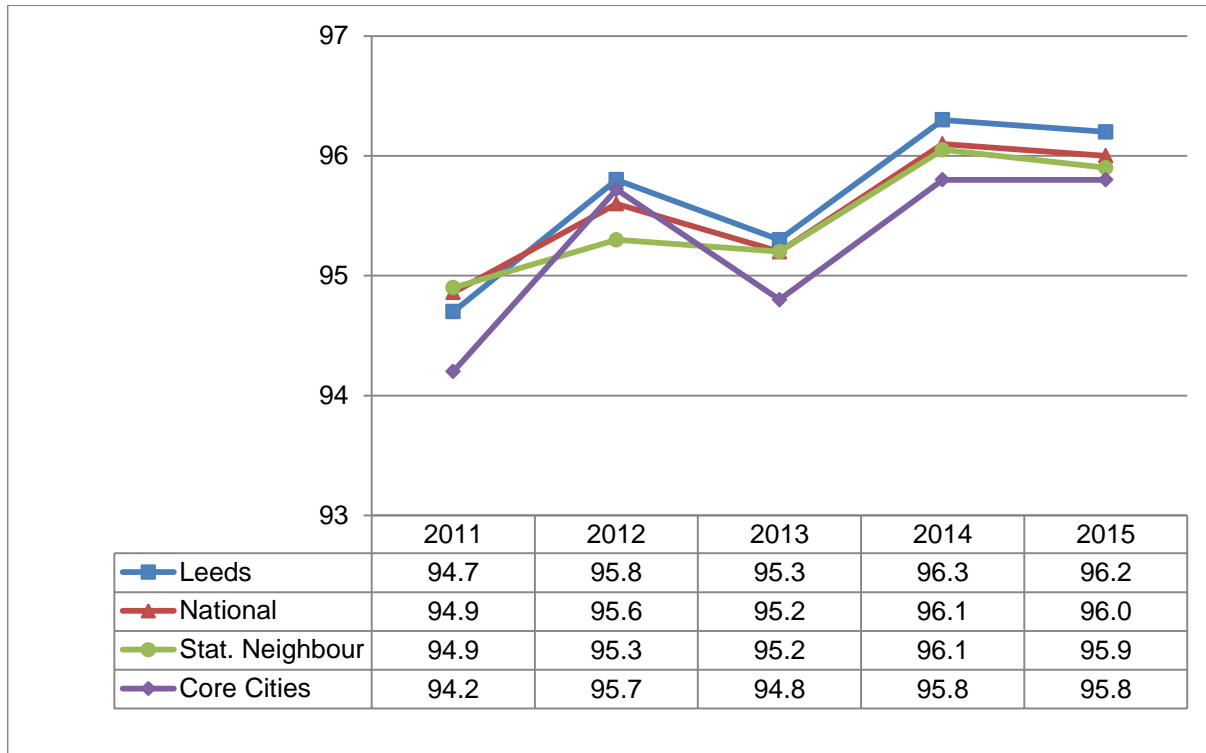


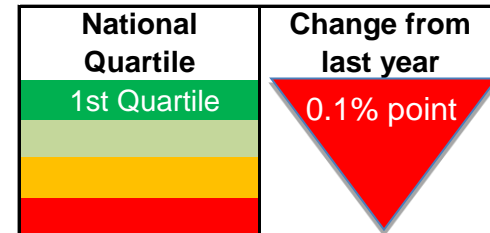
2014-15, Primary Attendance - Learning Outcomes Dashboards, half terms 1 - 4

<b>Dashboards</b>	<b>Changes Since Previous Version</b>
Percentage attendance in primary schools	New dashboard added
Percentage authorised absence in primary schools	New dashboard added
Percentage unauthorised absence in primary schools	New dashboard added
Percentage persistent absentees in primary schools	New dashboard added

## 2014-15, Percentage attendance in primary schools - half terms 1-4



England Rank	Equal 21/151
--------------	--------------



**Key Issues:** Attendance in Leeds primary schools has marginally decreased by 0.1 percentage point in 2014/15, despite this, Leeds primary school age pupils have a higher rate of attendance than our comparators.

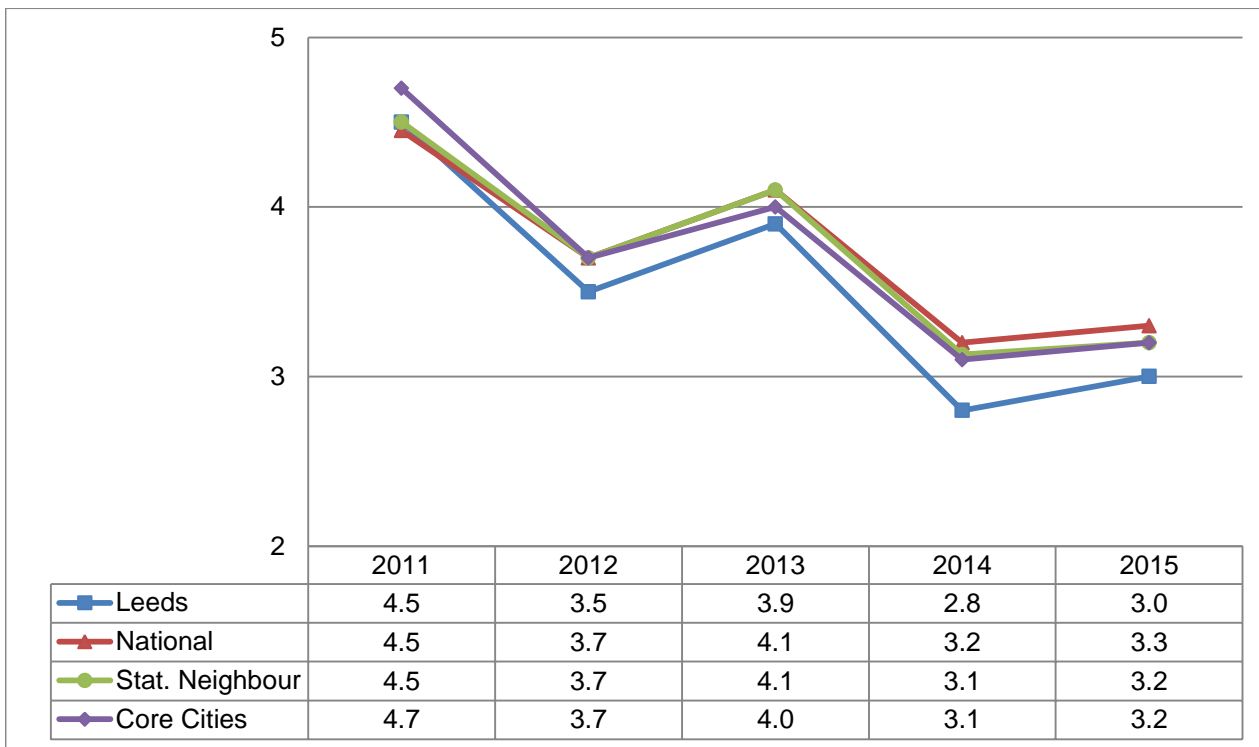
Data Status: Final

Data Source: DfE Statistical First Release SFR 39 2015

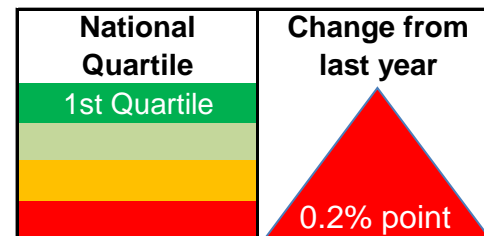
Data Notes: Half terms 1-4. Please note the statistical neighbour list for Leeds was revised in October 2014, therefore any comparisons should be made with caution.



## 2014-15, Percentage authorised absence in primary schools - half terms 1-4



England Rank	Equal 11/151
--------------	--------------



**Key Issues:** Authorised absence increased by 0.2 percentage points in 2014/15. This trend is mirrored nationally, by statistical neighbours and core cities. Leeds continues to have a higher rate of authorised absence than our comparators.

Data Status: Final

Data Source: DfE Statistical First Release SFR 39-2015

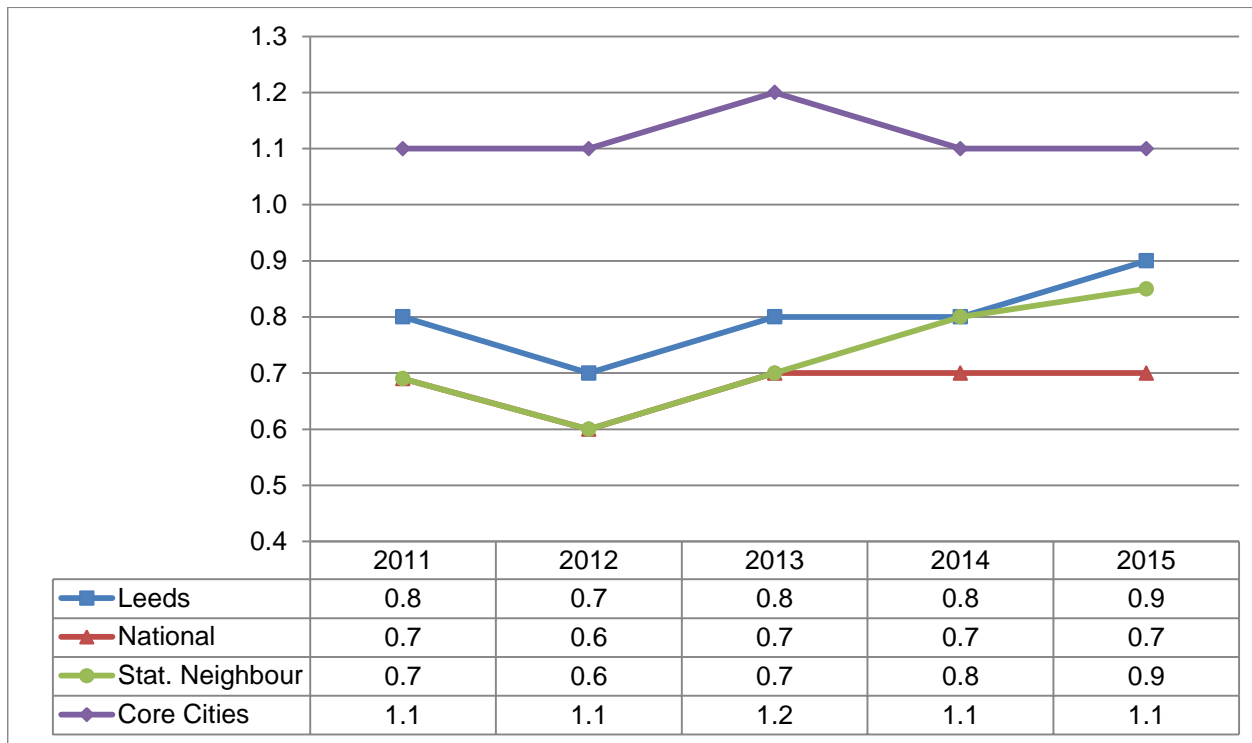
Data Notes: Half terms 1-4. Please note the statistical neighbour list for Leeds was revised in October 2014, therefore any comparisons should be made with caution.



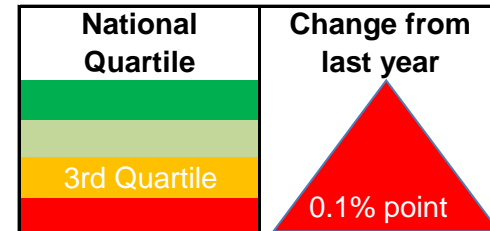
## 2014-15, Primary Attendance - Learning Outcomes Dashboards - Pupil Groups, half terms 1-4

<b>Dashboard</b>	<b>Changes Since Previous Version</b>
Percentage attendance in primary schools - Free School Meals (FSM)	New dashboard added
Percentage attendance in primary schools - EAL	New dashboard added
Percentage attendance in primary schools - SEN	New dashboard added
Percentage attendance in primary schools - Ethnicity	New dashboard added
Percentage attendance in primary schools - Gender	New dashboard added
Percentage attendance in primary schools - CLA	New dashboard added
Percentage attendance in primary schools - Year Group	New dashboard added

## 2014-15, Percentage unauthorised absence in primary schools - half terms 1-4



England Rank	equal 100/151
--------------	---------------



**Key Issues:** Unauthorised absence has increased by 0.1 percentage point in Leeds, mirroring the increase and trend of our statistical neighbours. Unauthorised absence for Leeds primary school children remains higher than the national average with a gap of 0.2 percentage point.

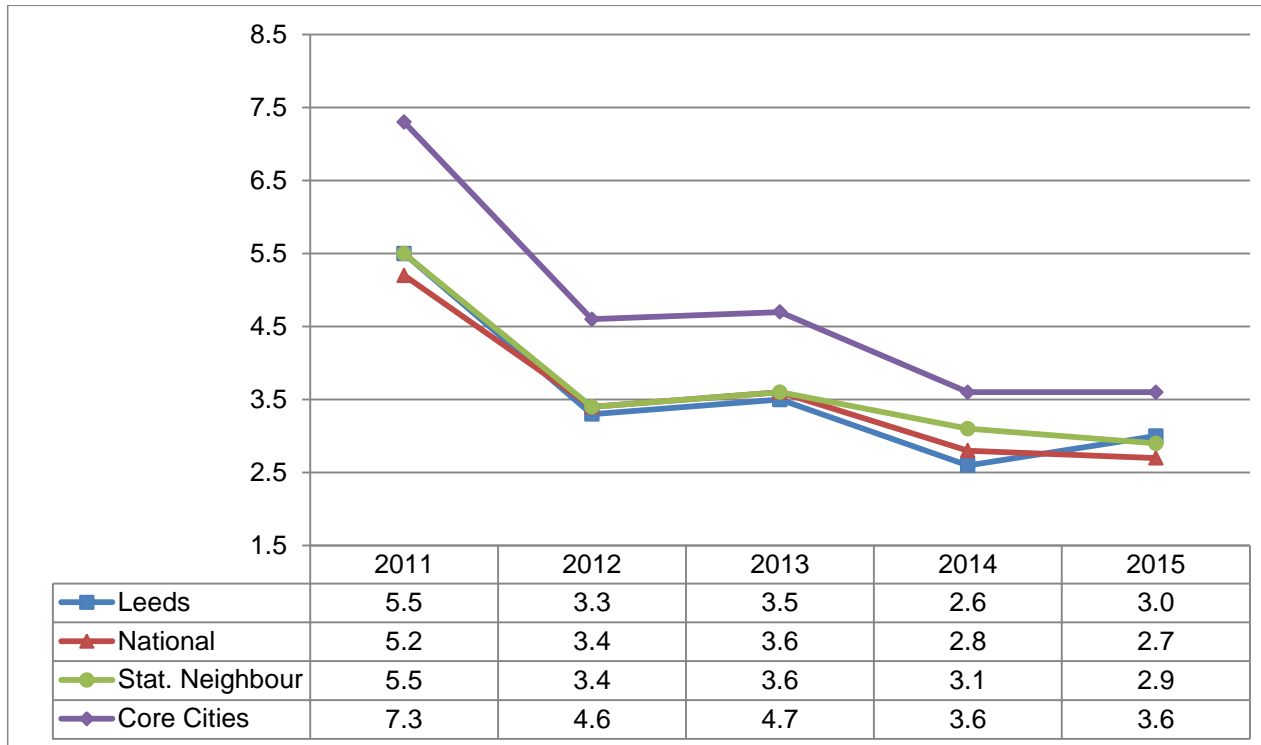
Data Status: Final

Data Source: DfE Statistical First Release SFR 39 2015

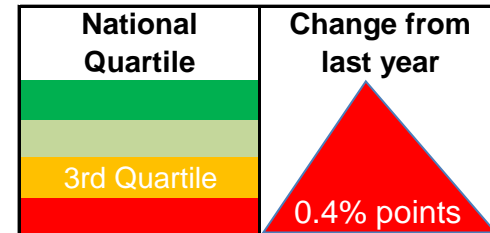
Data Notes: Half terms 1-4. Please note the statistical neighbour list for Leeds was revised in October 2014, therefore any comparisons should be made with caution.



## 2014-15, Percentage persistent absentees in primary schools - half terms 1-4



England Rank	equal 96/151
--------------	--------------



**Key Issues:** The percentage of pupils that met this threshold in 2014/15 in Leeds primary schools was three per cent. This sees an increase of 0.4 percentage point since 2013/14. Levels of persistent absence in primary schools in Leeds remained lower than levels of persistent absence in core cities, but higher than the national and statistical neighbours.

Data Status: Final

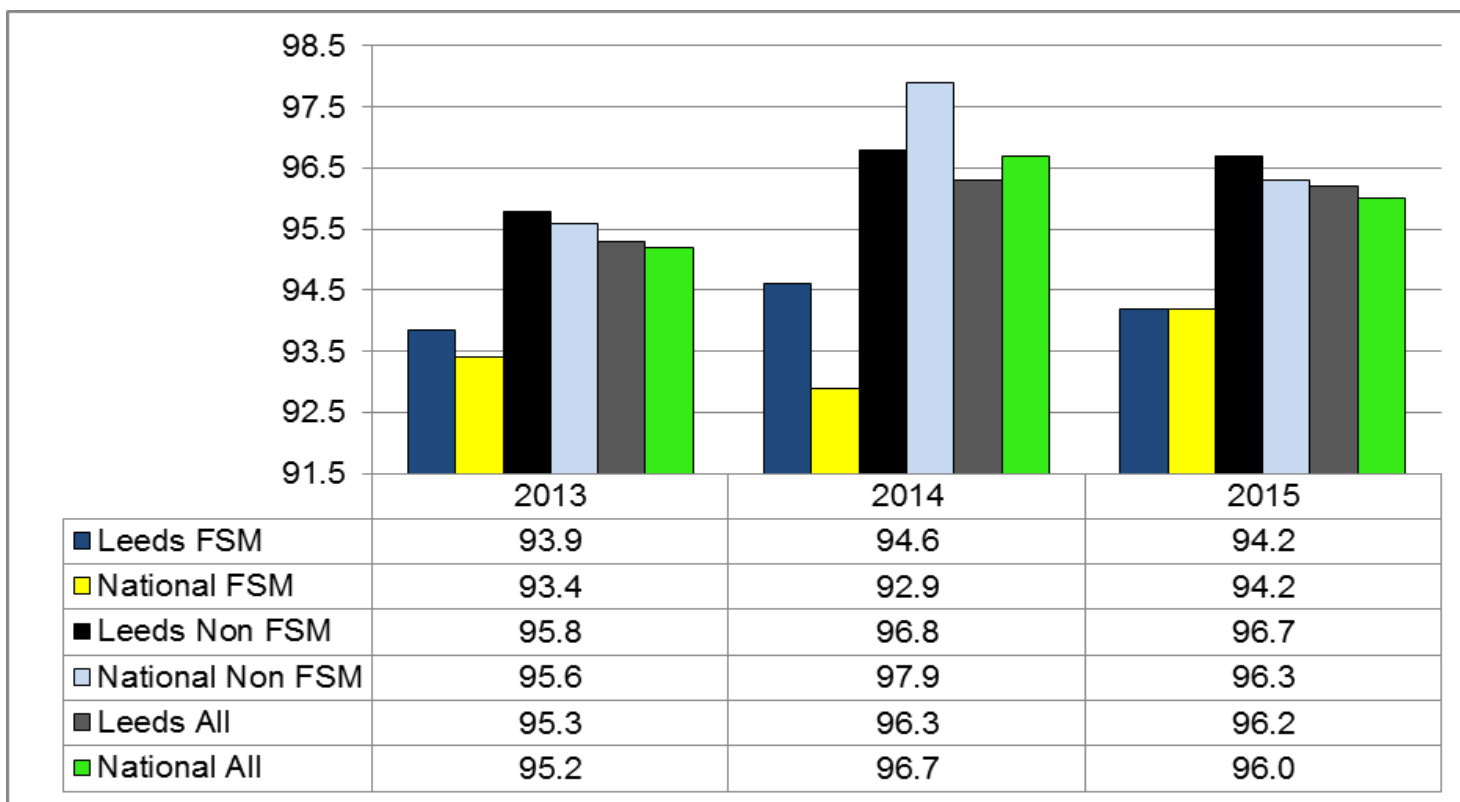
Data Source: DfE Statistical First Release SFR 39-2015

Data Notes: Persistent Absentees are defined as having an overall absence rate of around 15 per cent or more. This equates to 46 or more sessions of absence (authorised and unauthorised) during the year.

Half terms 1-4. Please note the statistical neighbour list for Leeds was revised in October 2014, therefore any comparisons should be made with caution.



## 2014-15, Percentage attendance in primary schools, half terms 1-4 - Free School Meals (FSM)



Change from last year  
0.4% points

**Key Issues:** Attendance for pupils on free school meals has decreased by 0.4 per cent points in Leeds and nationally there has been an improvement of 1.3 per cent points. In 2015 Leeds is inline with the national average. The gap between pupils on FSM and pupils that are not eligible for FSM is 2.5 per cent in Leeds and 2.1 per cent nationally.

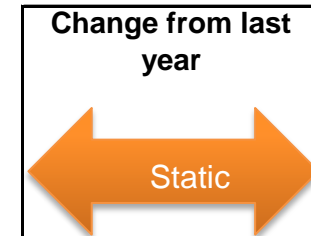
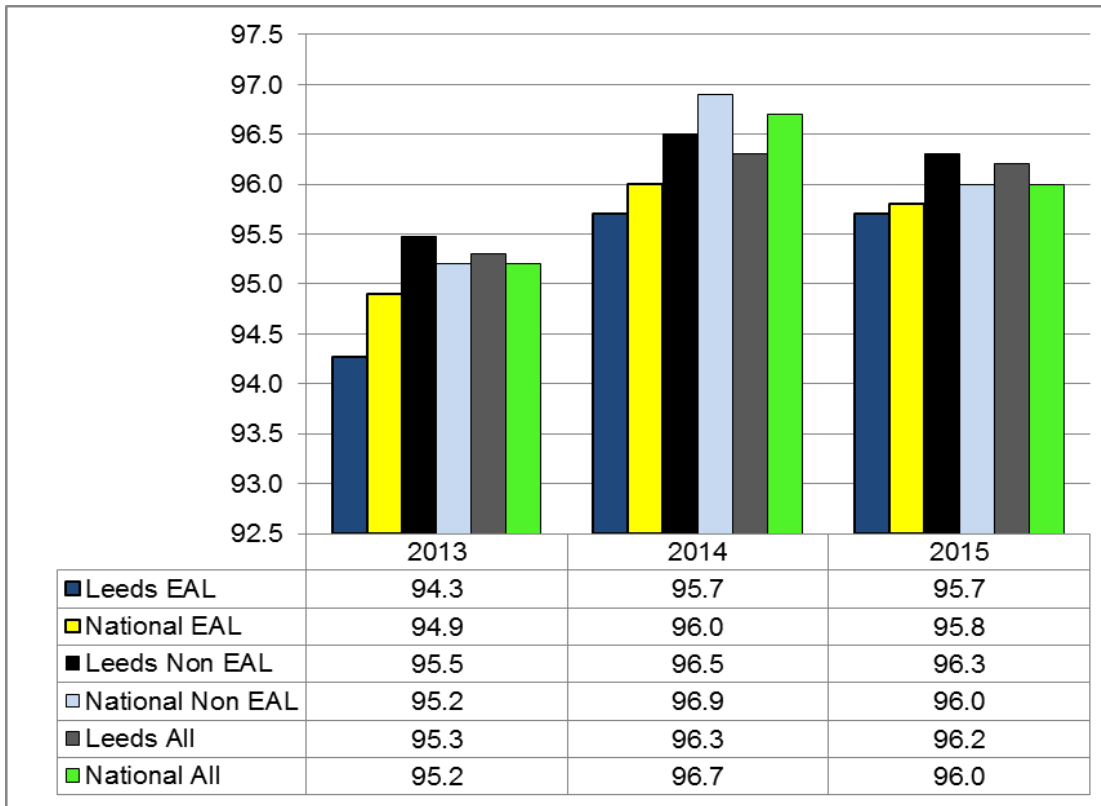
Data Status: Final

Data Source: Leeds data - local; national - DfE Statistical First Release SFR39/2015

Data Notes: As local data has been used there is no ranking or national quartile analysis for this dashboard.



## 2014-15, Percentage attendance in primary schools, half terms 1-4- English as an additional language (EAL)



**Key Issues:** Attendance for pupils who have EAL remains consistent with 2014 in Leeds and is slightly below the national average by 0.1 per cent points. The gap between pupils who are categorised as EAL and those that are not is 0.6 per cent points in Leeds and 0.2 per cent points nationally.

Data Status: Final

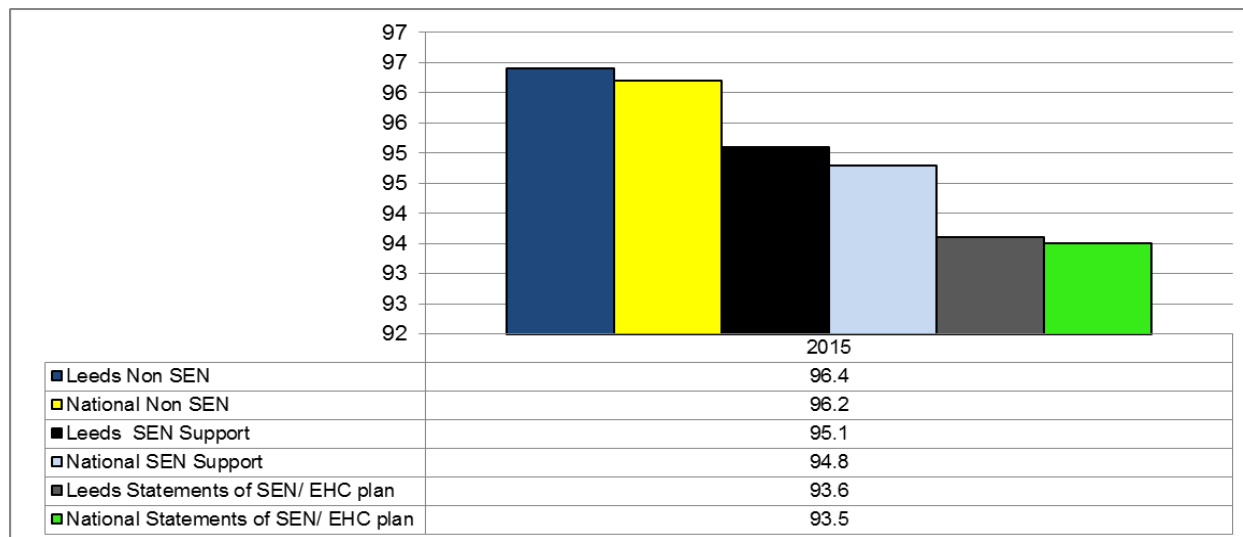
Data Source: Leeds data - local; national - DfE Statistical First Release SFR39/2015

Data Notes: As local data has been used there is no ranking or national quartile analysis for this dashboard.





## 2014-15, Percentage attendance in primary schools, half terms 1-4 - SEN



	Change from last year
Non SEN	N/A this is the first year data is being collected under these categories.
SEN Support	
Statements of SEN/ or EHC plan	

**Please note** from 2015 this indicator has been revised to report on SEN Support, SEN with a Statement or EHC plan and none SEN, therefore no historical data has been included in this dashboard. Leeds is above the national average across all groups.

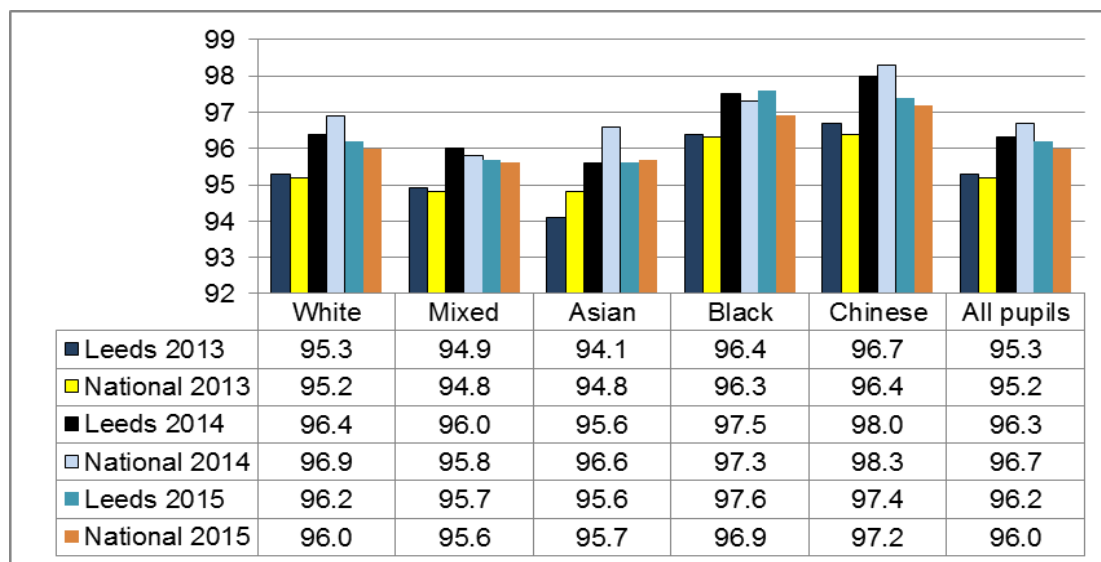
Data Status: Final

Data Source: Leeds data - local; national - DfE Statistical First Release SFR39/2015

Data Notes: As local data has been used there is no ranking or national quartile analysis for this dashboard. From 2015, pupils with SEN have been grouped into the following categories SEN support (This category replaces the former 'School Action' and 'School Action Plus'). Statement/EHC plan - A pupil has a statement of SEN or an EHC plan when a formal assessment has been made. This change is due to SEND reforms which came into effect in 2014.



## 2014-15, Percentage authorised absence in primary schools, half terms 1-4 - Ethnicity



	Change from last year
White	0.2% point ↓
Mixed	0.3% point ↓
Asian	Static
Black	0.1% point ↑
Chinese	0.6% point ↓

Key Issues: In Leeds attendance has decreased for Chinese pupils (0.6 per cent points), white pupils (0.2 per cent points) and Mixed pupils (0.3 per cent points). Leeds is above the national average for all groups except for Asian which is 0.1 per cent point behind the national figure.

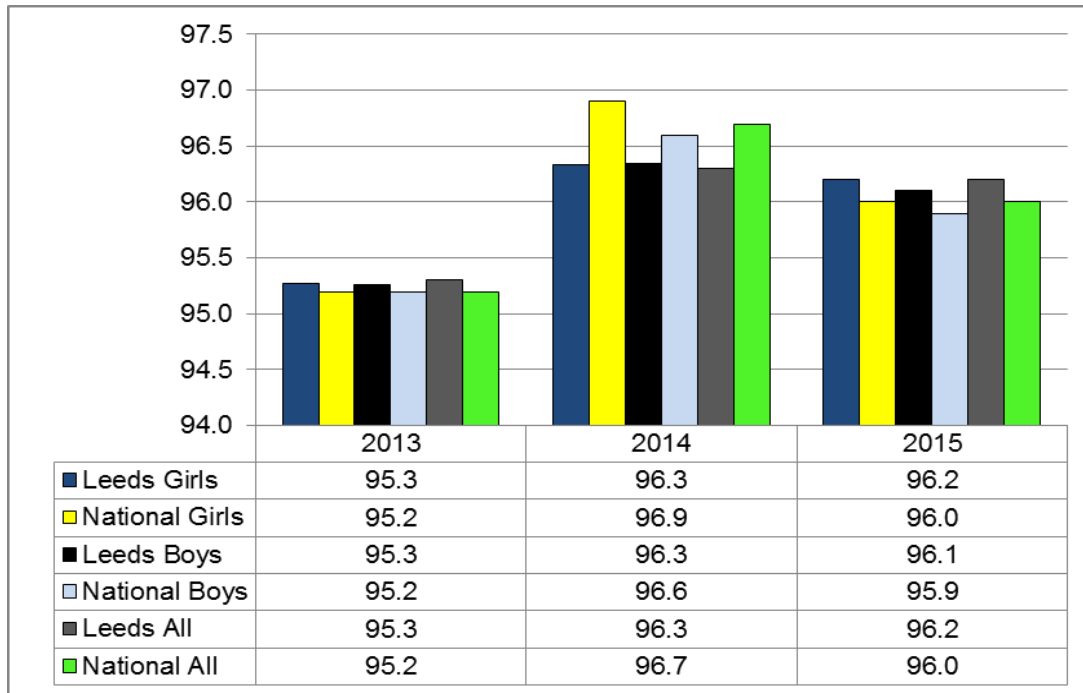
Data Status: Final

Data Source: Leeds data - local; national - DfE Statistical First Release SFR39/2015

Data Notes: As local data has been used there is no ranking or national quartile analysis for this dashboard.



## 2014-15 Percentage attendance in primary schools, half terms 1-4 - Gender



Boys	Girls
Change from last year 0.2% point	Change from last year 0.1% point

**Key Issues:** In Leeds attendance for girls has fallen by 0.1 per cent points and 0.2 percent points for boys. This mirrors a national trend where performance for girls has fallen by 0.9 per cent points and 0.7 per cent points for boys. Attendance for Leeds girls and boys is above the national average in 2015.

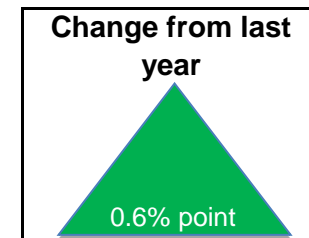
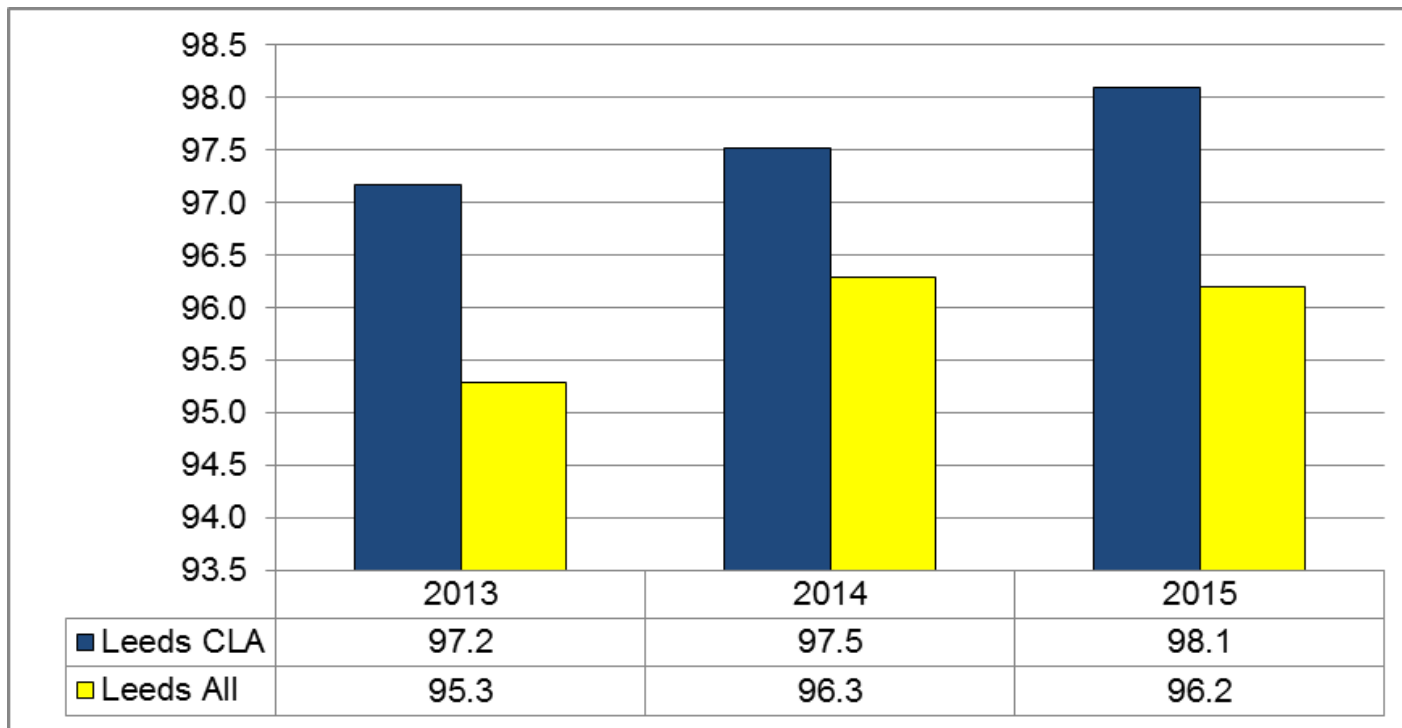
Data Status: Final

Data Source: Leeds data - local; national - DfE Statistical First Release SFR39/2015

Data Notes: As local data has been used there is no ranking or national quartile analysis for this dashboard.



## 2014-15 Percentage attendance in primary schools, half terms 1-4 - CLA



Key Issues: Attendance for CLA has improved by 0.6 per cent points and remains above the Leeds all figure of 96.2 per cent in 2015.

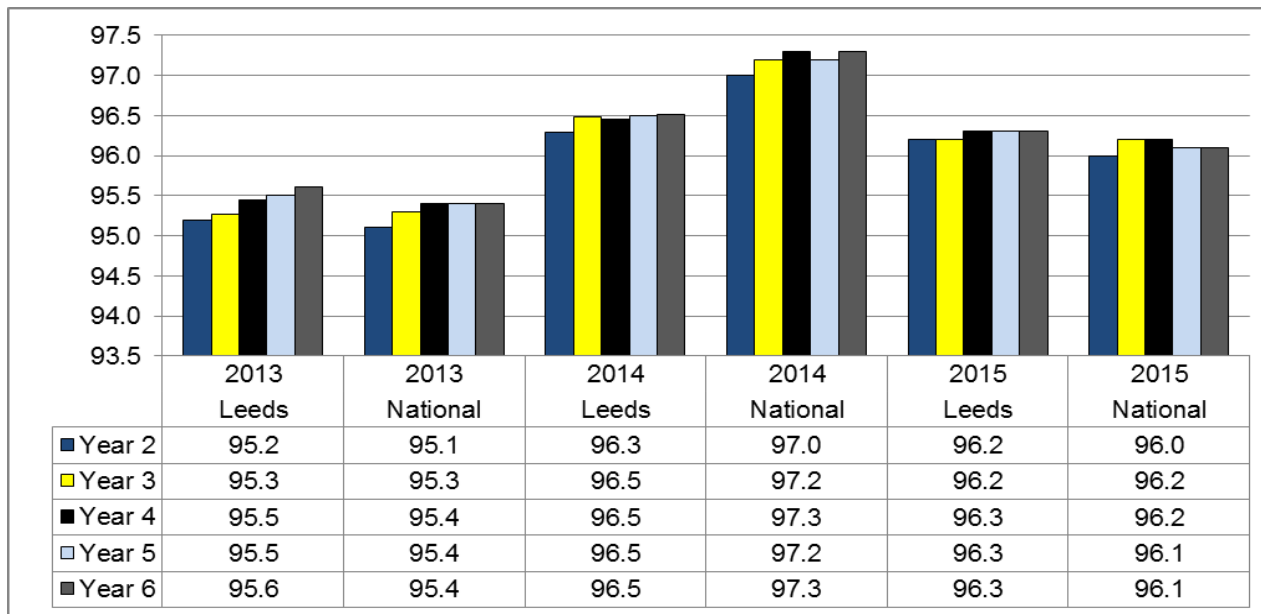
Data Status: Final

Data Source: Leeds all data - local mainstream schools only

Data Notes: There is no national breakdown of primary and secondary attendance for CLA and as local data has been used there is no ranking or national quartile analysis for this dashboard.



## 2014-15 Percentage attendance in primary schools, half terms 1-4 - year group



Change from last year	
Year 1	0.3% point ↓
Year 2	0.1% point ↓
Year 3	0.3% point ↓
Year 4	0.2% point ↓
Year 5	0.2% point ↓
Year 6	0.2% point ↓

Key Issues: Attendance has fallen across all year groups, with the biggest decrease in years 1 and 3 (0.3 percentage points). This downward trend has been mirrored nationally where attendance has fallen across all year groups with the largest decrease in years 1 (0.5 per cent points) 5, and 6 (0.4 per cent points). In 2015 Leeds is slightly above the national average across all year groups except year 3 which is inline with the national figure.

Data Status: Final

Data Source: Leeds data - local; national - DfE Statistical First Release SFR39/2015

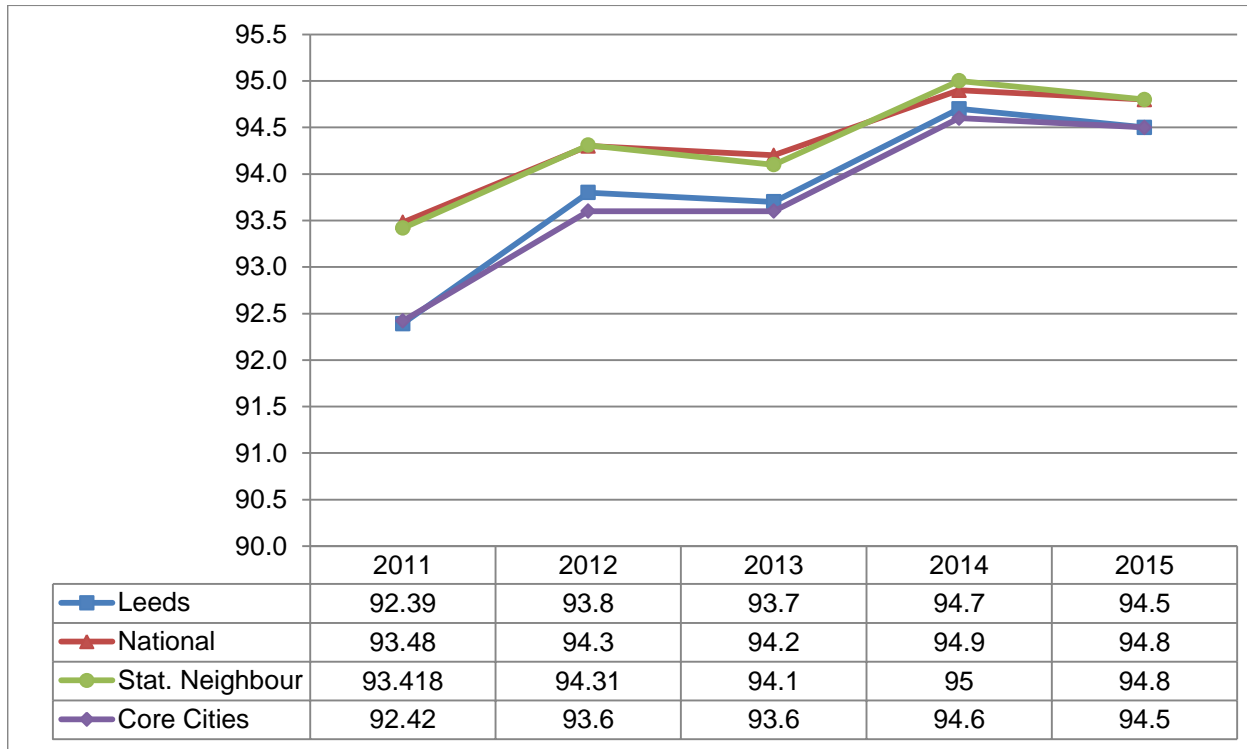
Data Notes: As local data has been used there is no ranking or national quartile analysis for this dashboard.



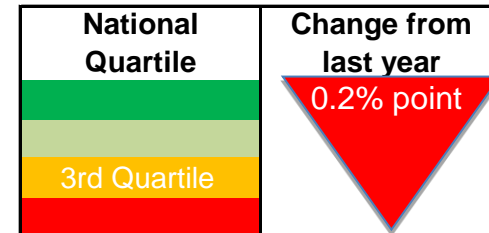
2013-14, Secondary Attendance - Learning Outcomes Dashboards, half terms 1 - 4

<b>Dashboard</b>	<b>Changes Since Previous Version</b>
Percentage attendance in secondary schools	New dashboard added
Percentage authorised absence in secondary schools	New dashboard added
Percentage unauthorised absence in secondary schools	New dashboard added
Percentage persistent absentees in secondary schools	New dashboard added

## 2014-15, Percentage attendance in secondary schools, half terms 1-4



England Rank	equal 113/151
--------------	---------------



**Key Issues:** Attendance has marginally decreased in Leeds secondary schools in 2014/15 by 0.2 percentage point, mirroring the trend in performance of our comparators. Attendance in Leeds remain lower than the national average and that of statistical neighbours but in line with the performance of core cities.

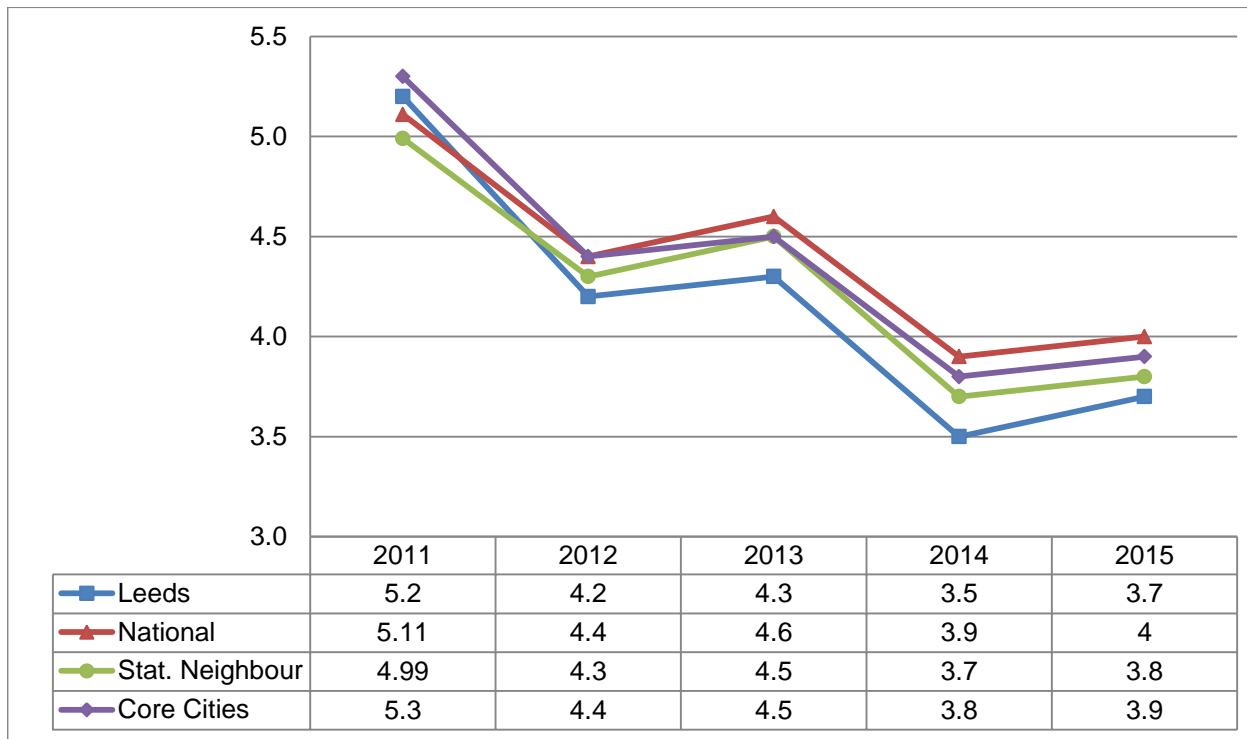
Data Status: Final

Data Source: DfE Statistical First Release SFR 39 2015

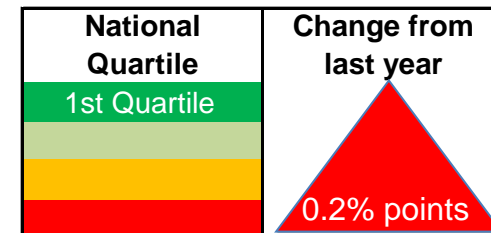
Data Notes: Half terms 1-4. Please note the statistical neighbour list for Leeds was revised in October 2014, therefore any comparisons should be made with caution.



## 2014-15, Percentage authorised absence in secondary schools, half terms 1-4



England Rank	Equal 38/151
--------------	--------------



**Key Issues:** There was an increase of 0.2 percentage point in authorised absence in Leeds in 2014/15, but despite this increase, performance in Leeds is better than the national, statistical neighbour and core city average.

Data Status: Final

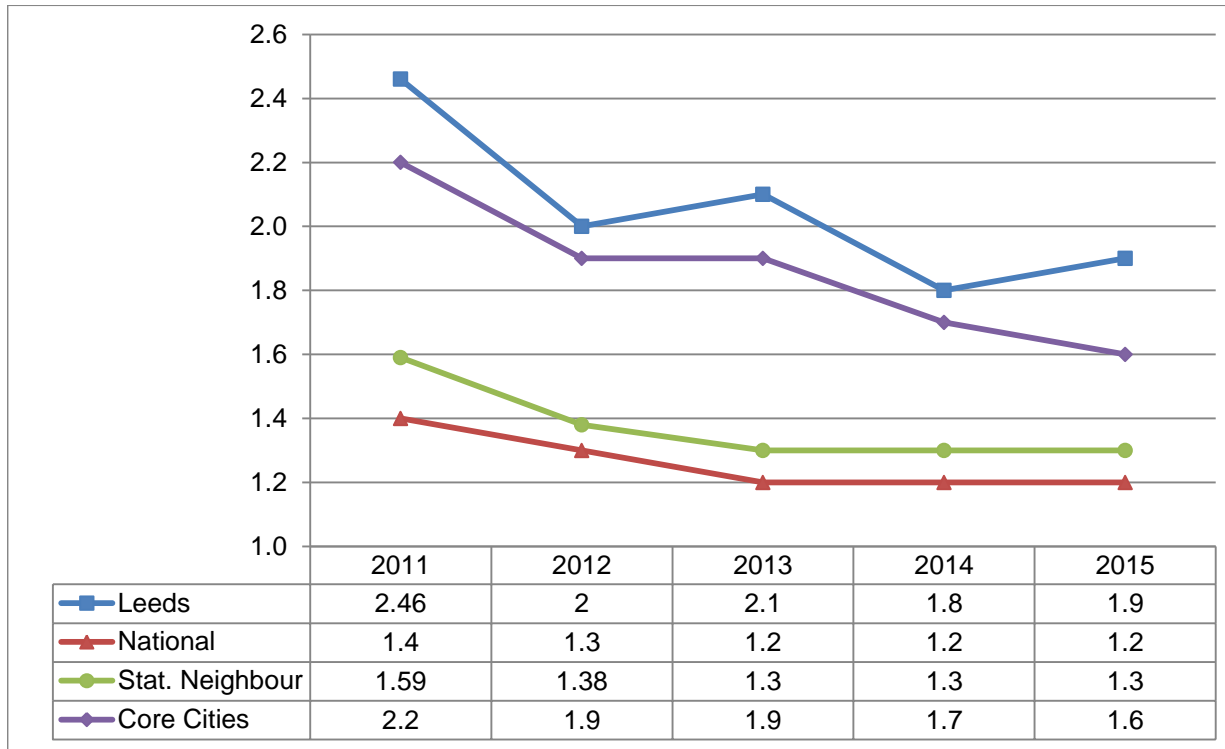
Data Source: DfE Statistical First Release SFR 39 2015

Data Notes: Half terms 1-4. Please note the statistical neighbour list for Leeds was revised in October 2014, therefore any comparisons should be made with caution.

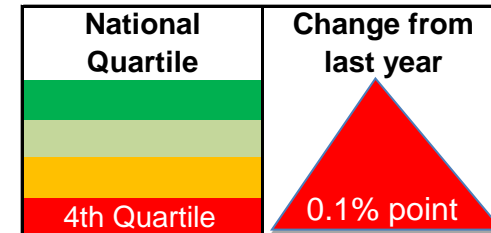




## 2014-15, Percentage unauthorised absence in secondary schools, half terms 1-4



England Rank	equal 137/151
--------------	---------------



**Key Issues:** There was a 0.1 percentage point increase in unauthorised absence in Leeds in 2014/15. Unauthorised absence remained static nationally and for statistical neighbours, but fell by 0.1 percentage points for core cities. Unauthorised absence remains higher in Leeds.

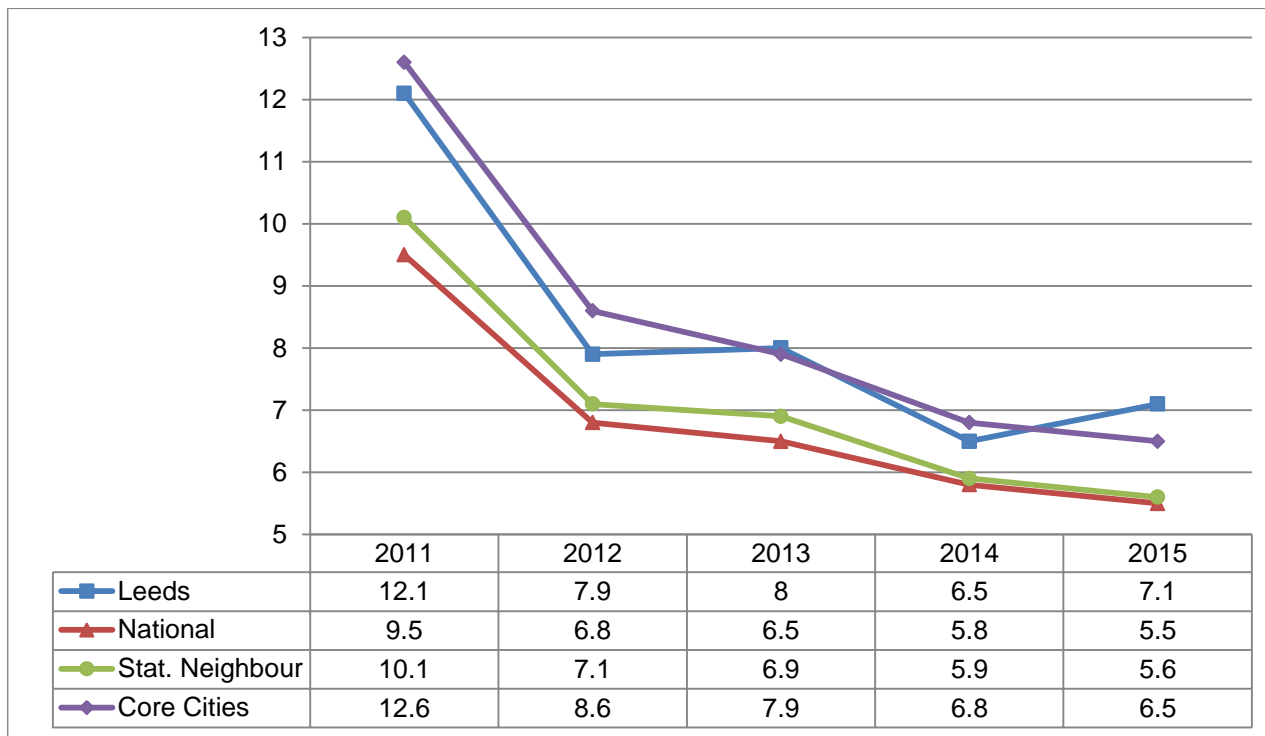
Data Status: Final

Data Source: DfE Statistical First Release SFR 39-2015

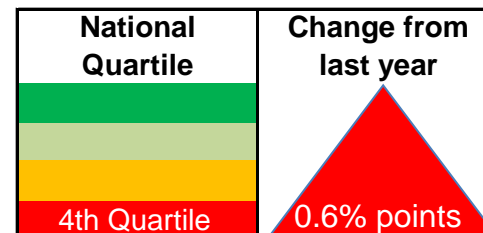
Data Notes: Half terms 1-4. Please note the statistical neighbour list for Leeds was revised in October 2014, therefore any comparisons should be made with caution.



## 2014-15, Percentage persistent absentees in secondary schools, half terms 1-4



England Rank	equal 138/151
--------------	---------------



**Key Issues:** 7.1 per cent of pupils in Leeds secondary schools missed more than 15 per cent of school in 2014/15, which is 0.6 percentage points higher than in 2013/14. Persistent absence fell nationally, in statistical neighbours authorities and core cities. Levels of persistent absence remain higher in Leeds.

Data Status: Final

Data Source: DfE Statistical First Release 39 2015

Data Notes: Persistent Absentees are defined as having an overall absence rate of around 15 per cent or more. This equates to 41 or more sessions of absence (authorised and unauthorised) during the year.

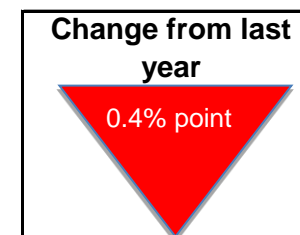
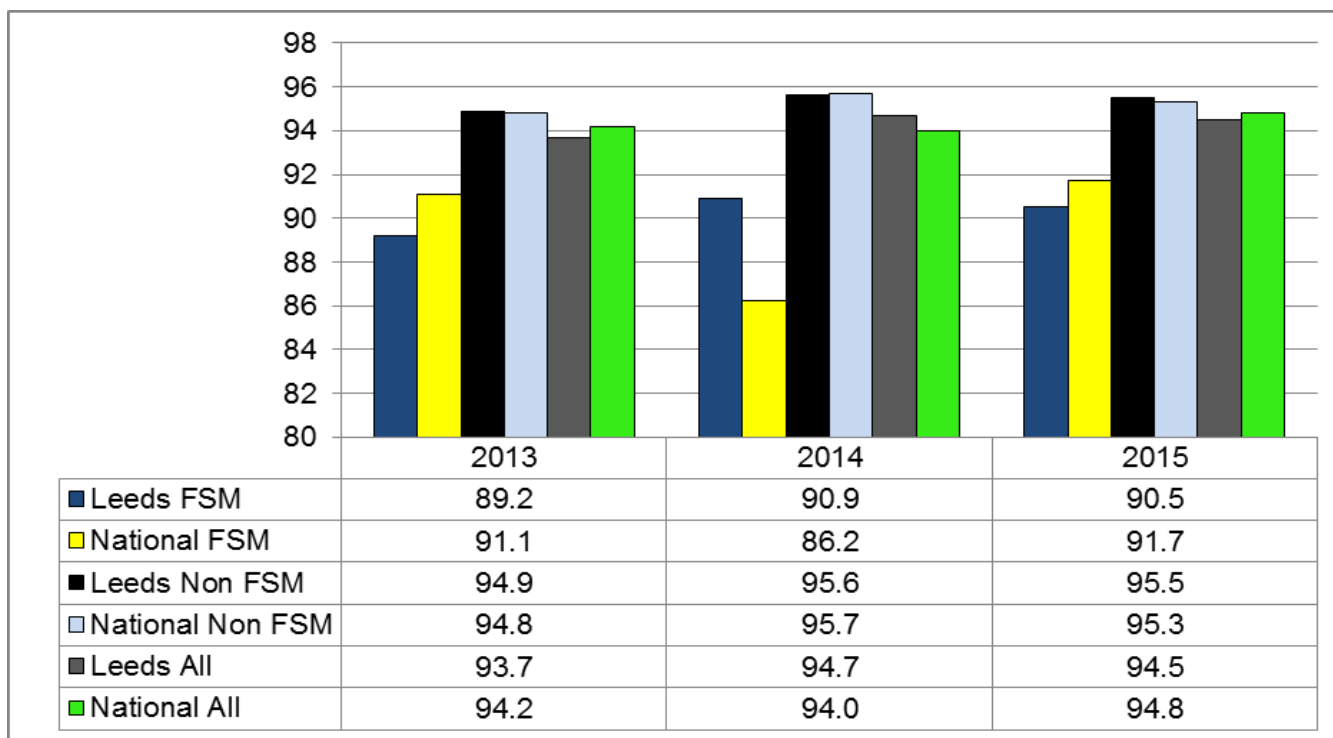
Half terms 1-4



## 2014-15, Secondary Attendance - Learning Outcomes Dashboards - Pupil Groups, half terms 1-4

<b>Dashboard</b>	<b>Changes Since Previous Version</b>
Percentage attendance in secondary schools - Free School Meals (FSM)	New dashboard added
Percentage attendance in secondary schools - EAL	New dashboard added
Percentage attendance in secondary schools - SEN	New dashboard added
Percentage attendance in secondary schools - Ethnicity	New dashboard added
Percentage attendance in secondary schools - Gender	New dashboard added
Percentage attendance in secondary schools - CLA	New dashboard added
Percentage attendance in secondary schools - Year Group	New dashboard added

## 2014-15, Percentage attendance in secondary schools, half terms 1-4 - Free School Meals (FSM)



Key Issues: Attendance of pupils on free school meals has decreased by 0.4 per cent points in Leeds, nationally attendance for pupils on FSM has increased by 5.5 per cent points to 91.7 per cent putting Leeds below the national average by 1.2 per cent points. The gap between pupils eligible for FSM and those that are not is 5 per cent points in Leeds and 3.6 per cent points nationally.

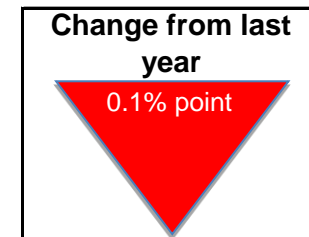
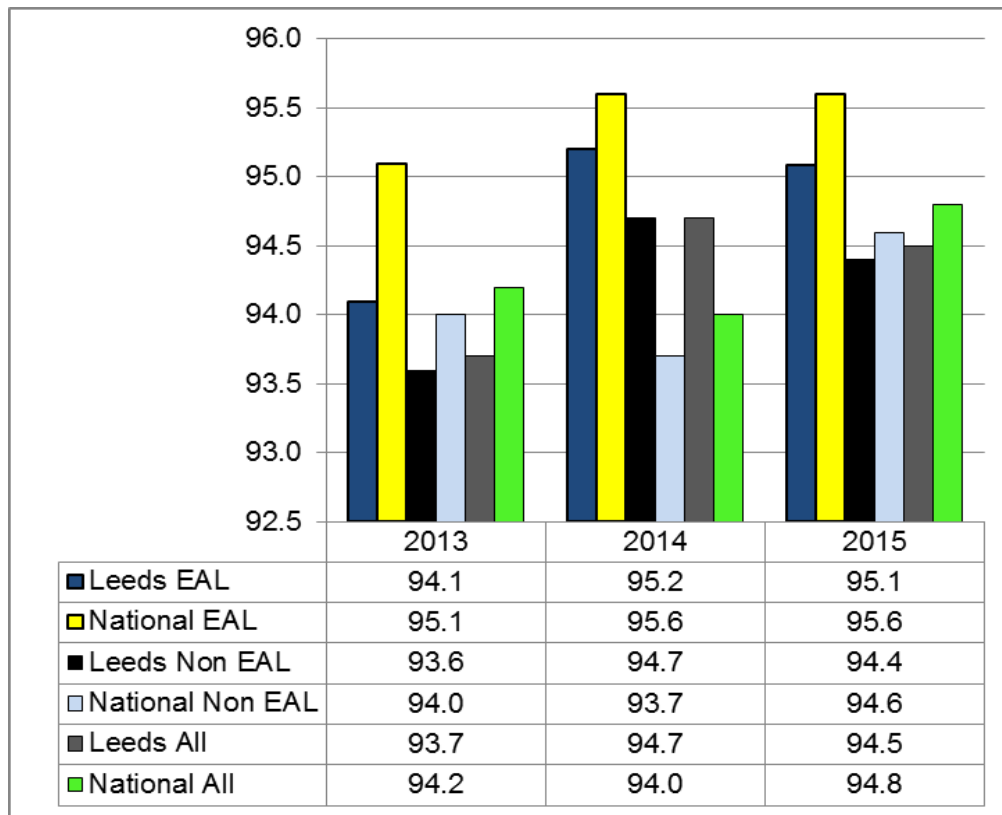
Data Status: Final

Data Source: Leeds data - local; national - DfE Statistical First Release SFR39/2015

Data Notes: As local data has been used there is no ranking or national quartile analysis for this dashboard.



## 2014-15, Percentage attendance in secondary schools, half terms 1-4- English as an additional language (EAL)



Key Issues: In Leeds attendance for pupils who have EAL has decreased slightly by 0.1 per cent points since 2015 and remains below the national average by 0.5 per cent points. The attendance of non EAL pupils has also decreased in Leeds by 0.3 per cent points.

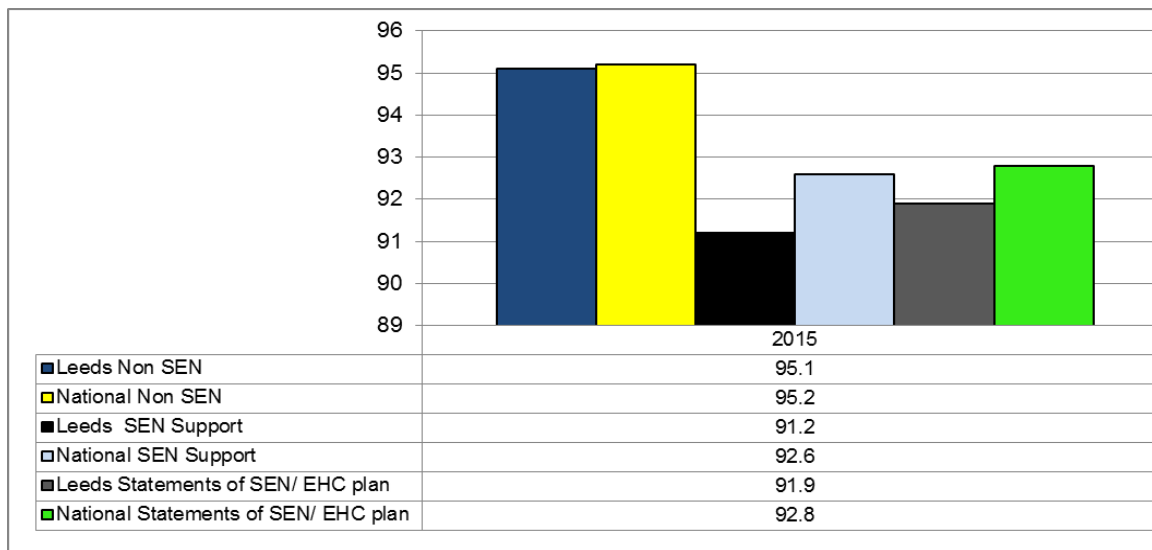
Data Status: Final

Data Source: Leeds data - local; national - DfE Statistical First Release SFR39/2015

Data Notes: As local data has been used there is no ranking or national quartile analysis for this dashboard.



## 2014-15, Percentage attendance in secondary schools, half terms 1-4 - SEN



	Change from last year
Non SEN	N/A this is the first year data is being collected under these categories.
SEN Support	
EHC plan	

Please note from 2015 this indicator has been revised to report on SEN Support, SEN with a Statement or EHC plan and none SEN, therefore no historical data has been included in this dashboard. Leeds is below the national average across all groups in this measure.

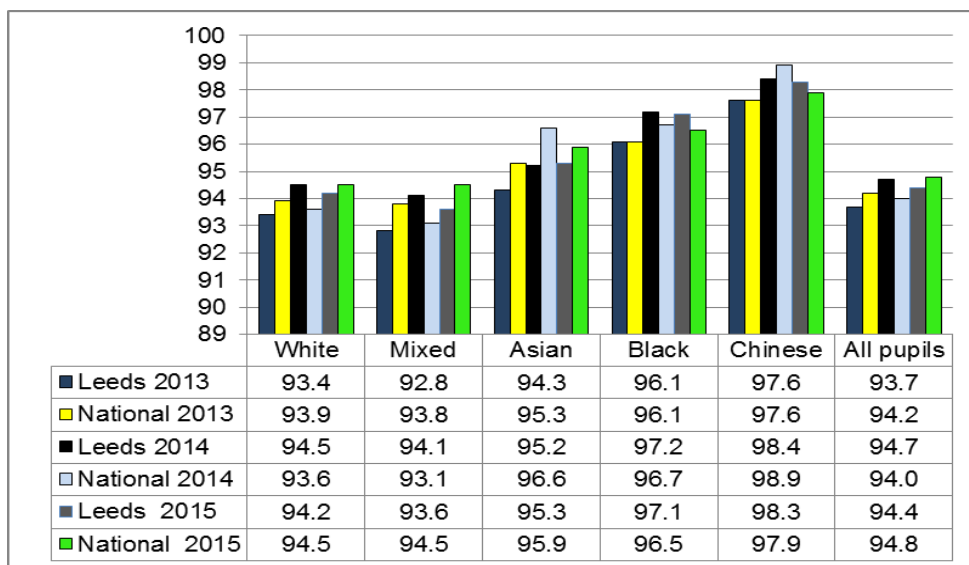
Data Status: Final

Data Source: Leeds data - local; national - DfE Statistical First Release SFR39/2015

Data Notes: As local data has been used there is no ranking or national quartile analysis for this dashboard. From 2015, pupils with SEN have been included in the following categories SEN support (This category replaces the former 'School Action' and 'School Action Plus'). Statement/EHC plan - A pupil has a Statement or EHC plan when a formal assessment has been made. This change is due to SEND reforms which came into effect in 2014.



## 2014-15, Percentage authorised absence in secondary schools, half terms 1-4 - Ethnicity



	Change from last year
<b>White</b>	0.3% point ↓
<b>Mixed</b>	0.5% point ↓
<b>Asian</b>	0.1% point ↑
<b>Black</b>	0.1% point ↓
<b>Chinese</b>	0.1% point ↓

Key Issues: Chinese and black pupils have the highest attendance rates (98.3% and 97.1%). Performance has fallen across all groups in 2015 except Asian pupils where attendance has improved slightly. Leeds is above the national average in the following groups: black and Chinese.

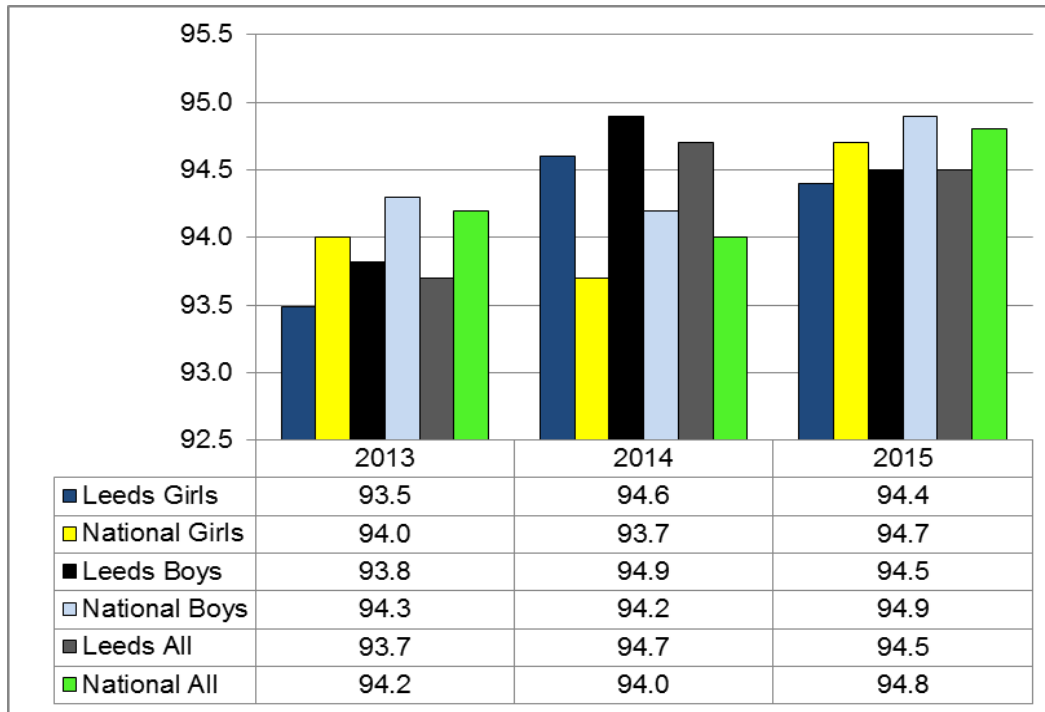
Data Status: Final



Data Source: Leeds data - local; national - DfE Statistical First Release SFR39/2015

Data Notes: As local data has been used there is no ranking or national quartile analysis for this dashboard.



## 2014-15 Percentage attendance in secondary schools, half terms 1-4 - Gender



Boys	Girls
<b>Change from last year</b>  0.4% point	<b>Change from last year</b>  0.2% point

Key Issues: Leeds boys have a higher attendance rate than girls by 0.1 percentage point, replicating the national trend where the gap between girls and boys is 0.2 percentage point. In Leeds both groups are below the national figure.

Data Status: Final

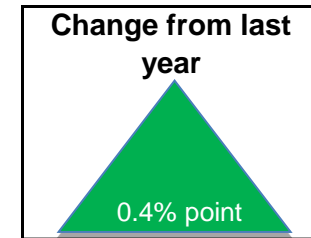
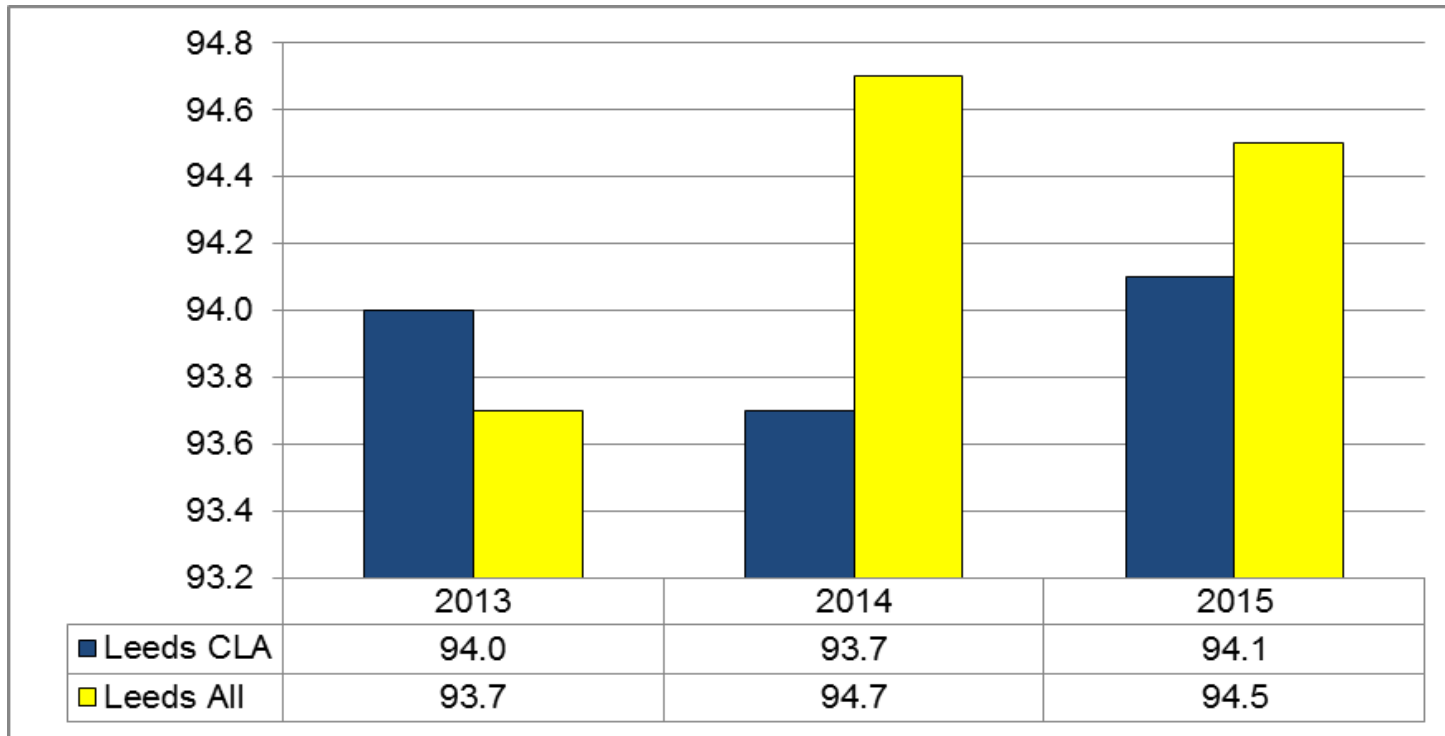
Data Source: Leeds data - local; national - DfE Statistical First Release SFR39/2015

Data Notes: As local data has been used there is no ranking or national quartile analysis for this dashboard.





## 2014-15 Percentage attendance in secondary schools, half terms 1-4 - CLA



**Key Issues:** Attendance for CLA has improved by 0.4 per cent points in 2015. The attendance gap between all pupils and CLA is 0.4 per cent points.

Data Status: Final

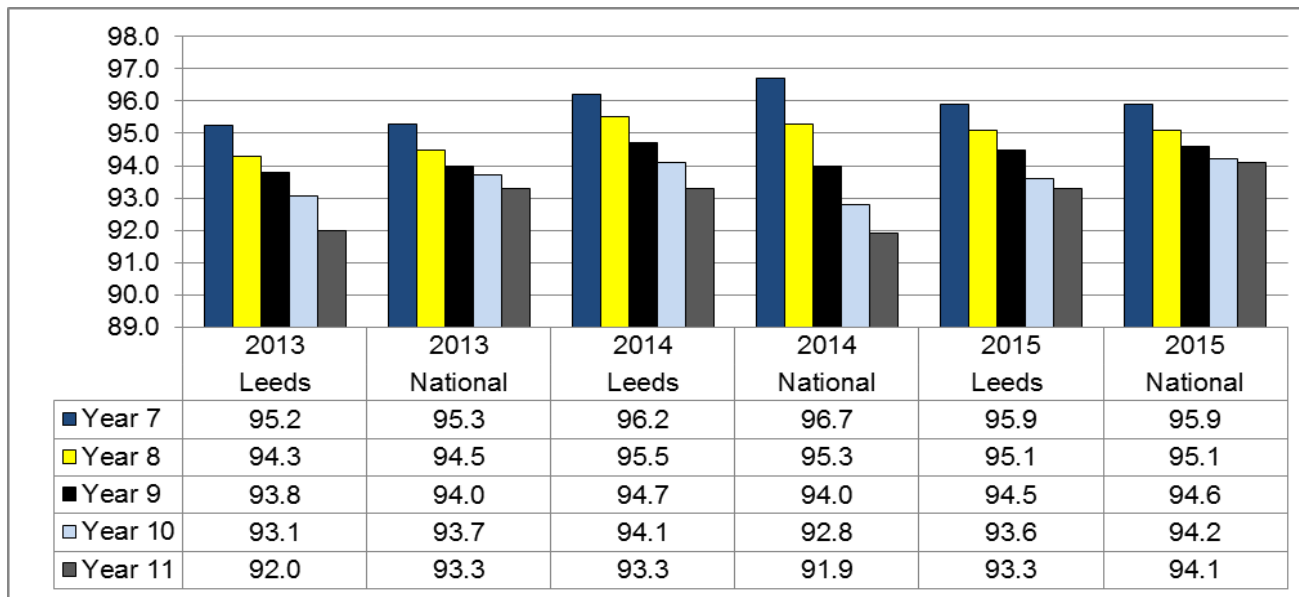
Data Source: Leeds all data

Leeds CLA data - local mainstream schools only

Data Notes: There is no national breakdown of primary and secondary attendance for CLA and as local data has been used there is no ranking or national quartile analysis for this dashboard.



## 2014-15 Percentage attendance in secondary schools, half terms 1-4 - year group



	Change from last year
Year 7	0.3% point ↓
Year 8	0.4% point ↓
Year 9	0.2% point ↓
Year 10	0.5% point ↓
Year 11	Static ↔

Key Issues: Attendance for pupils across all year groups has decreased in 2015. The biggest decrease has been seen by year 8 (0.4 per cent points) and year 10 (0.5 per cent points). In Leeds years 7 and 8 are inline with the national average whilst years 9, 10 and 11 are below the national figures.

Data Status: Final

Data Source: Leeds data - local; national - DfE Statistical First Release SFR39/2015

Data Notes: As local data has been used there is no ranking or national quartile analysis for this dashboard.

